



Leckhampton
C of E Primary School

Teaching, Learning and Assessment Model

Approved November 2018
For review November 2020



School Vision, Values and Aims

Our school vision, values, aims and motto are rooted in the Church of England's Vision for Education; ***Deeply Christian, Serving the Common Good.***

“An outstanding, values driven school, preparing children for modern Britain and a changing world.”

At Leckhampton Church of England Primary School, the children are at the heart of all we do and we believe that every child deserves the opportunity to be happy, feel valued and experience success. We aim to support all children in developing a love of lifelong learning, supported by our four Christian values.

Respect Compassion Responsibility Perseverance

These values are supported by our school aims;

- Provide outstanding teaching and learning experiences which develop compassionate, confident and resilient learners.
- Provide a curriculum which is inspiring, creative and progressive.
- Equip our children with the skills needed to become curious, independent, lifelong learners.
- Provide an indoor and outdoor environment which stimulates curiosity and confidence.
- Develop values for life, enabling all pupils to respect themselves and others.
- Develop children's' understanding of what it means to be part of a community and how they can make a difference.
- Positively establish strong links with schools and communities in other countries.
- Strengthen our engagement with the local Church and Diocese and other faith groups.
- Promote sustainability and ecological awareness.
- Provide professional development and training opportunities for staff and governors.
- Drive forward positive changes and support one another along the journey.
- Manage our financial and environmental resources responsibly; providing a safe, stimulating, eco-friendly and sustainable environment with the highest level of staffing and continued professional development.

Our School Motto;

open hearts open minds open doors

Our Learning Environment

Our learning environment is at the heart of what we do and reflects and affirms the values and ethos of the Leckhampton family.

Our learning environment:

- Is warm and welcoming.
- Is safe and secure.
- Personifies the school's vision and ethos.
- Promotes values for life and the core British values.
- Is inspiring, arouses curiosity and encourages reflection and compassion.
- Is flexible and meets the needs of the children.
- Uses display to enhance and reflect current learning, encourage thinking and promote discussion.
- Celebrates the achievements and efforts of all of our children.
- Reflects the Leckhampton Curriculum

Leadership and Management at our school

We recognise that everyone is a learner and that all teachers are leaders and managers of learning. In order to support staff in the development of teaching, learning and assessment at our school, the Governors, Headteacher, Senior Leadership Team (SLT), Middle Leadership Team (MLT) and project leaders play a vital role in promoting and communicating the values, standards and ethos of the school.

The leaders and managers of the school:

- Lead by example.
- Share and demonstrate the inclusive values and vision at the heart of the Leckhampton family.
- Demonstrate a commitment to high standards and a passion for learning.
- Ensure that all children remain at the heart of what we do.
- Establish and communicate clear and effective systems and practices to help promote the delivery of effective teaching and learning.
- Support and listen to staff, parents and pupils and actively seeks their views and opinions.
- Support and work collaboratively with governors to provide a rich and balanced curriculum.
- Have a responsibility to know and understand current educational policy and pedagogy and communicate that clearly and effectively to all staff.
- Support staff in their professional development.
- Ensure consistency and continuity across the school and equality of entitlement for all pupils.
- Monitor the impact of teaching, learning and assessment across the school and share and communicate best practice.
- Collect evidence of best practice and use this to inform self-evaluation and school improvement.
- Share and communicate our successes and achievements with the Leckhampton family.

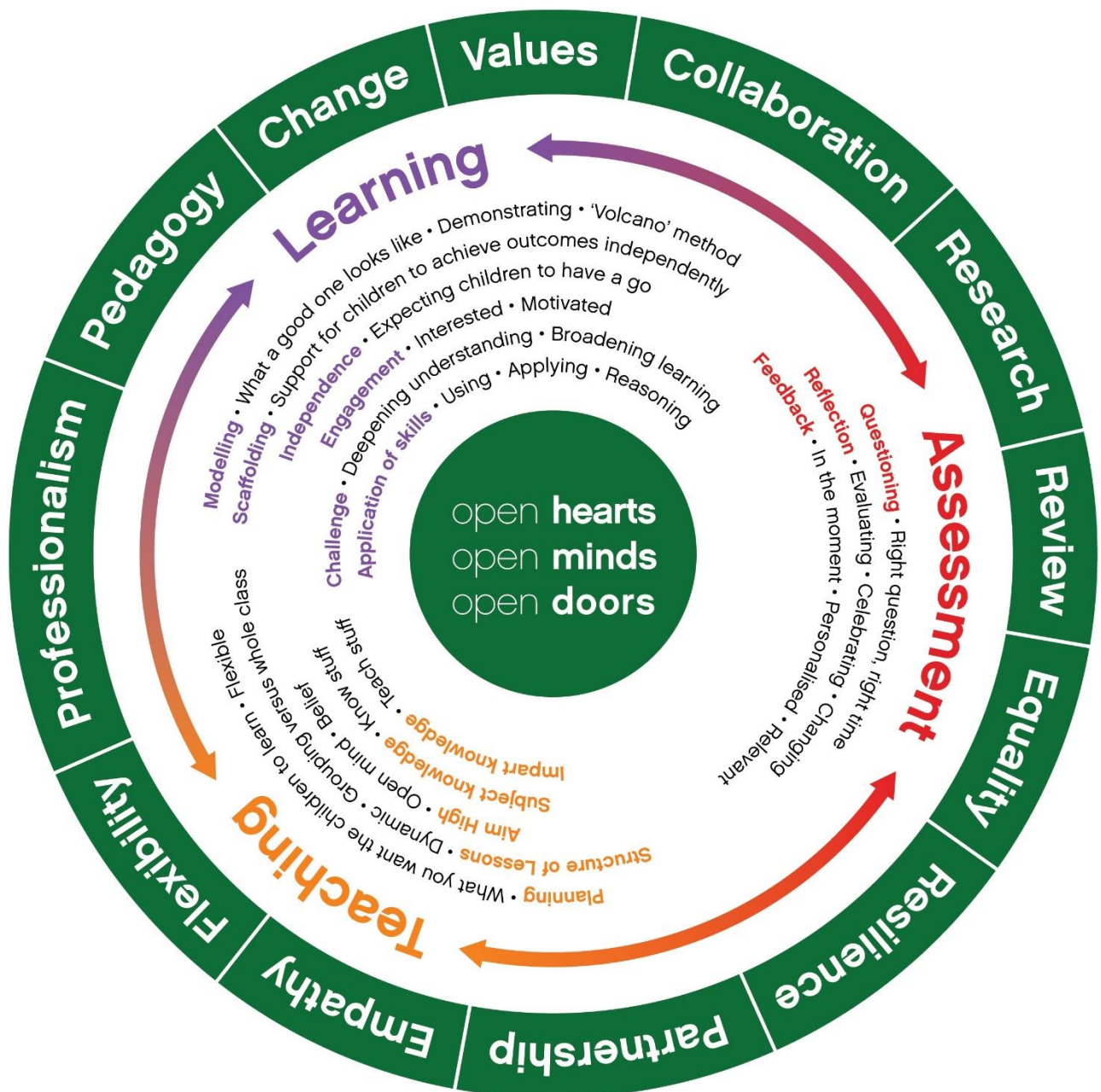
The Teaching, Learning and Assessment Model

We aim to deliver consistently high levels of teaching, learning and assessment that fosters a love of learning and develops curiosity, self-confidence and excellent levels of progress and attainment for all of our children.

This is delivered through our bespoke Teaching, Learning and Assessment Model.

The model has been designed with the following principles in mind;

- Clear and concise strategy.
- Rooted in pedagogy.
- It meets the needs of our school family.
- It can be shared with and understood by everyone.



As you will see, the model refers to something called the “Volcano Method”. This is a school based term which references a specific teaching strategy. It focusses primarily on the way in which teachers can effectively disseminate subject knowledge or information to children. As a result, children can confidently recall and apply this new knowledge or information in future lessons.

Monitoring and Evaluation

The Governors will monitor and evaluate the T, L and A model through planned focus visits whereas the Leadership Team will do this by walking around (BWA.). This method has been well documented as an effective and supportive way to celebrate what is working well and identifying where development can take place on a daily basis.